

Sany Mobile Crushing, Screening and Recycling Equipment for Solid Construction Wastes
Sany Mobile Impact Crusher

Quality Changes the World

SCIM1213RC6 & SCIM1213RC8

Sany Mobile Impact Crusher

Diesel-driven Series

It can produce **300t/h** concrete aggregate,
while the fuel consumption is **20%** lower than that of the competitive
product under the same working conditions;

High Output

- Intelligent feeding, and independent pre-screening
- Direct drive of crusher by engine
- Double-chamber structure and high-precision heavy-duty rotor

Low Energy Consumption

- Direct drive system
- Separate setting of traveling/working power
- Adaptive power saving mode of the system
- With environmental-friendly spray & dust reduction system

High Reliability

- Imported core components
- Super wear-resistant parts
- High-strength endurance test under full working conditions



SCIM1213REC6 & SCIM1213SEC6

Sany Mobile Impact Crusher

Electric-driven Series

Green and Energy Saving Lower Use Cost

Efficient Crushing

- 150–260t/h yield of aggregates below 31.5mm
- Innovative cavity design with good finished particle shape
- 250kw dedicated motor to provide strong power

Low Energy Consumption

- Electric drive, with comprehensive energy consumption of 200–260kWh
- Separate setting of traveling/working without hydraulic losses
- Zero emission during smashing operations

High Reliability

- Overload protection for crusher, and with high work efficiency
- Excavator chassis with good reliability
- Imported hydraulic components and reducer assembly

Technical Parameters of Diesel-driven Series

S/N	Main Parameters	Unit	SCIM1213RC6	SCIM1213RC8	Remarks
Feeding System					
1	Nominal volume of receiving hopper	m³	6	6	Standard configuration
	Maximum feeding size	mm	600	600	Maximum continuous feeding size, with opening height of 900mm
	Maximum feeding capacity	t/h	450	450	Depends on the characteristics of the raw materials
	Number of pre-screening sieve layers	Layers	2	2	Heavy-duty, innovative sieve pores
Power System					
2	Brand	-	Scania/Volvo	Scania/Volvo	-
	Emission level	-	National-III	National-IV	-
	Rated power	KW/rpm	371/1800	368/1800	-
Crushing System					
3	Processing capacity	t/h	150-450	150-450	Depends on the characteristics of the raw materials
	Crusher power	kw	260/ (Direct engine drive)	260/ (Direct engine drive)	
	Rotor size (D × W)	mm	φ 1200 × 1300	φ 1200 × 1300	-
	Discharge opening	mm	20-100	20-100	Hydraulic adjustment of outlet size
Traveling System					
4	Rated power	KW	55	55	-
	Traveling speed (high/low)	Km/h	1/0.3	1/0.3	Maximum speed on flat ground/slope
	Maximum climbing capacity	-	7°	7°	The maximum climbing angle without the final screening system is 15°
	Track tread × distance between left and right centers	mm	4100 × 2600	4100 × 2600	Crawler chassis for Sany excavator
Operation Mode					
5	Operation screen	-	Touch screen	Touch screen	-
	Remote control	-	Wireless	Wireless	-
	Remote online upgrade	-	Available	Available	Including online services and online trouble diagnosis
Transportation Parameters					
6	L × W × H	mm	21800 × 3400 × 3900	21800 × 3400 × 3900	Including final screening system
	Transportation weight of whole machine	T	67	67	Including final screening system

Technical Parameters of Electric-driven Series

S/N	Main Parameters	Unit	SCIM1213REC6 (Single-layer Final Screening for 1 Material)	SCIM1213SEC6 (Double-layer Final Screening for 2 Materials)	Remarks
Feeding System					
1	Nominal volume of receiving hopper	m³	6	6	Standard configuration
	Maximum feeding size	mm	600	600	Maximum continuous feeding size, with opening height of 900mm
	Maximum feeding capacity	t/h	350	350	Depends on the characteristics of the raw materials
	Number of pre-screening sieve layers	Layers	2	2	Heavy-duty, innovative sieve pores
Power System					
2	Brand	-	Yuchai/Sany	Yuchai/Sany	-
	Emission level	-	National-IV	National-IV	-
	Rated power	KW/rpm	96/2,200 (for traveling)	96/2,200 (for traveling)	-
Crushing System					
3	Processing capacity	t/h	150-350	150-350	Depends on the characteristics of the raw materials
	Crusher power	kw	250kw (external power supply, 380V)	250kw (external power supply, 380V)	Motor
	Rotor size (D × W)	mm	φ 1200 × 1300	φ 1200 × 1300	-
	Discharge opening	mm	15-100	15-100	Hydraulic adjustment of outlet size
Traveling System					
4	Rated power	KW	/	/	-
	Traveling speed (high/low)	Km/h	1/0.3	1/0.3	Maximum speed on flat ground/slope
	Maximum climbing capacity	-	7°	7°	The maximum climbing angle without the final screening system is 15°
	Track tread × distance between left and right centers	mm	4100 × 2600	4100 × 2600	Crawler chassis for Sany excavator
Operation Mode					
5	Operation screen	-	Touch screen	Touch screen	-
	Remote control	-	Wireless	Wireless	-
	Remote online upgrade	-	Available	Available	Including online services
Transportation Parameters					
6	L × W × H	mm	21800 × 3400 × 3900	21800 × 3400 × 3900	Including final screening system
	Transportation weight of whole machine	吨	65	66	Including final screening system

Application Scenarios



Scope of Application

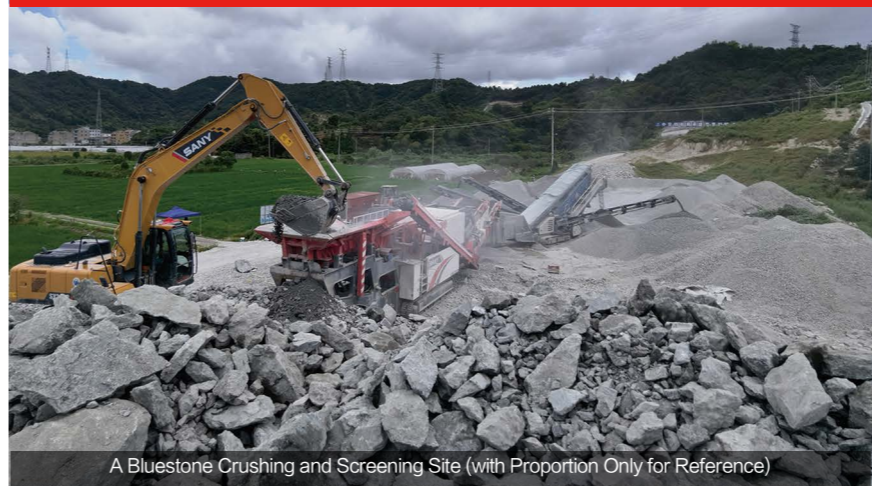
Raw Materials

Hard wastes from construction, transportation, water conservancy, railway, cement and building industries (with a compressive strength not exceeding 150MPa and a diameter size less than 600mm)

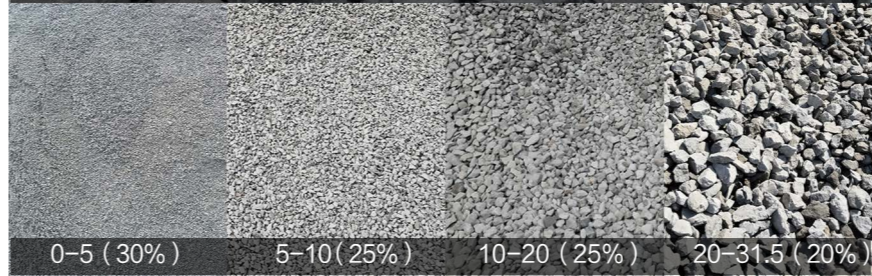
Natural solid wastes from medium-soft rock (limestone, bluestone, slate, etc.)

Recycled materials (solid waste from construction, solid waste from concrete component, solid waste from cement pavement, etc.)

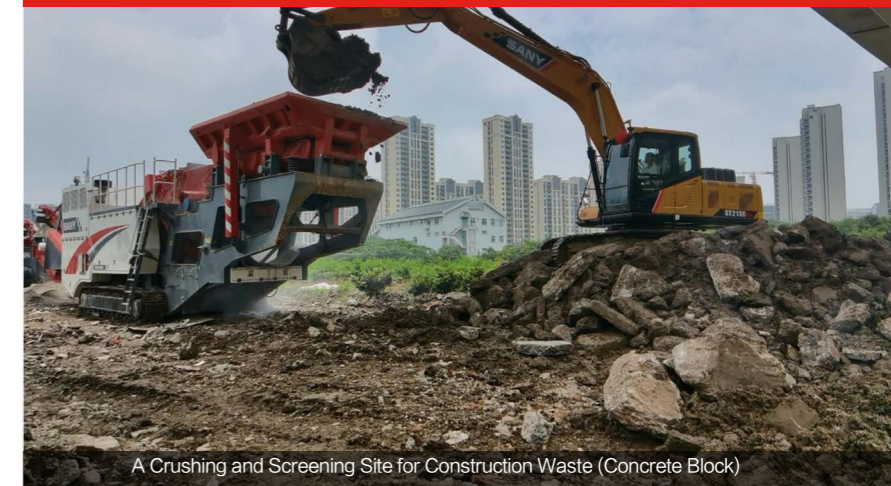
Natural Finished Materials
The mixture is produced by the mobile impact crusher, which is separated into 4 types of finished aggregates through the mobile screening plants (with adjustable grading according to the sieves).



A Bluestone Crushing and Screening Site (with Proportion Only for Reference)



Recycled Finished Materials
The mixture is produced by the mobile impact crusher as raw materials for brick making, pavement bedding or cement-stabilized materials.



A Crushing and Screening Site for Construction Waste (Concrete Block)



Choose SANY and enjoy lifetime

Brand Guarantee of Sany Group

Sany Group is the world's leading equipment manufacturing enterprise, the largest construction machinery manufacturer in China and the third largest in the world, and the world's largest concrete machinery manufacturer. In 2015, it was enrolled into the first batch of pilot demonstration enterprises of "intelligent manufacturing" in China by the Ministry of Industry and Information Technology.

Intelligent Manufacturing Lean Production

The essence of Sany equipment lies in high reliability. Sany introduces the world's leading lean manufacturing process, implements a deviation elimination standard of 1/10000, and strives for excellence in every process, with an aim to making every product perfect.

The World's Top R&D Strength

SANY spends about 7% of its annual sales revenue on R&D. It runs a national technology development center and a post-doctoral mobile workstation. It has applied the most patents in the industry and has won five national science and technology awards.

Marketing Services Around the World

SANY operates in more than 150 countries and regions around the world, including more than 30 marketing service companies, more than 500 marketing service network points, and more than 6,000 top salespersons nationwide.

Whole Industry Chain Financial Services

SANY Finance can provide mortgage loan services for customers who purchase new equipment from SANY. This one-stop and whole-process financial service system can keep you worry-free.

Customer First and Perfect Service

In order to improve the installation and delivery quality of products and enhance the customer satisfaction, Sany has specially formulated a "perfect delivery" program for customers.

